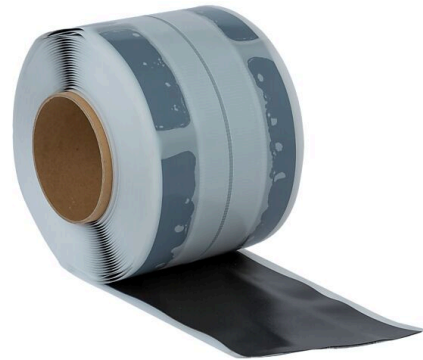


MEMBRA® Corner Tape

Corner Tape for Membra® membrane system

Description :

Membra Corner Tape consists of PE foam, a middle section of self-adhesive butyl and a side section with polyolefin adhesive. The three adhesive sections are protected with silicone-treated foil. Each part of the foil covers its own adhesive section to allow for safe and easy installation. The Corner Tape provides a robust and waterproof transition in corners between walls and in the transition between floor and wall.



Application :

Membra Corner Tape is part of the Membra Wet Room System. The tape is used to ensure robust and waterproof connections in corners between walls and between floors and walls. The tape provides excellent adhesion to solid substrates such as concrete, screed, wet-room panels, plasterboard and waterproof wood boards approved for use in wet rooms, old tiles etc.

Installation :

Membra Corner Tape is installed along the entire length/height of the wall at a distance of 1 cm from all internal or external corners. Measure and cut ready lengths. First remove the middle foil and fold the tape lengthwise so that the adhesive edge faces out. Push a profiling tool into the crease and firmly stick the tape to the transition between the floor and the wall. Then remove the foil on the part of the tape facing the wall. Affix/press firmly with the profiling tool. Affix the part of the tape facing the floor in a similar way. See separate installation instructions.

NB: The substrate must be firm, clean, dry and free from grease. Always prime floors and absorbent substrates first with Membra Adhesive Primer.

For more details see laying instruction on our website.

Accessories for :

MEMBRA® Membranduk

Storage :

Dry and protected from UV

Approvals and guarantee



MEMBRA® Corner Tape 620100

Product data	Value	Designation
Thickness	0,95	mm
Width	100	mm
Length in mm	15000	mm
Material	PE foam	-

